

Söz: Fuzûîî

Lenk Fahte (Merhem koyup onarma sinemde kanlı dağı) Beste:SADEDDİN KAYNAK

MER REM KO YUP O NAR MA SI NEM DE

Musical notation for the first line of the song, featuring a treble clef, a key signature of one flat (B-flat), and a 4/4 time signature. The melody is written on a single staff with various note values and rests. Below the staff, the lyrics are written in a stylized font: KAN LI DÂ Ğİ SÖN DÜR..... ME ÖZ E LİN LE YAN.

[illegible]

LELE LELI VAY TERE LELLELELE LELE LELLELE LELLELE LELLELE VAY TERE LELLELE

[illegible]

RA Ğİ AH ZÜL FÜ..... Sİ YEH SA NEM LER OL MUŞ SE
CA Ğİ

NİN E Sİ RİN AH ZÜL FÜ Sİ YEH SA NEM LER OL MUŞ

..... SE NİN E SİRİN AŞ KIN DA HER BİRİ NİN

ÖZ ZÜL FÜ BOY NU BA ĞI TEN NEN TEN NEN NEN



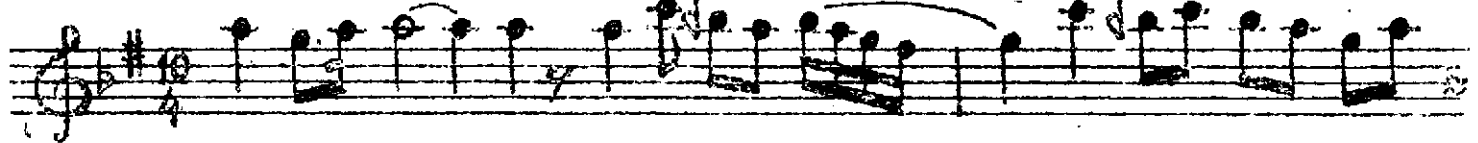
TE NE NI TE NEN TE NE NEN TEN NENTEN NEN NEN TE NE NI TE NEN TENE NEN



TEN NEN TEN NEN NEN TEN NEN TEN NEN NEN TEN



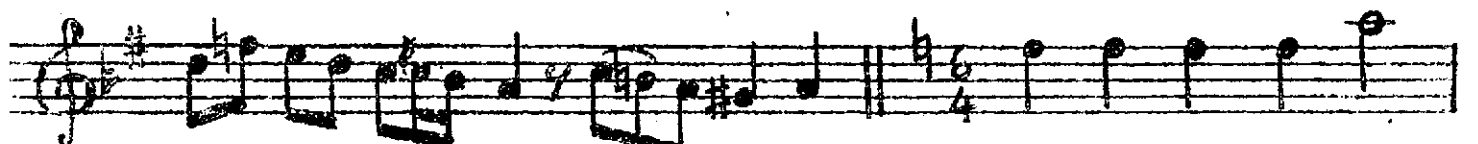
TEN TE NE Nİ TE NEN TE NE NEN NÂ (Saz)



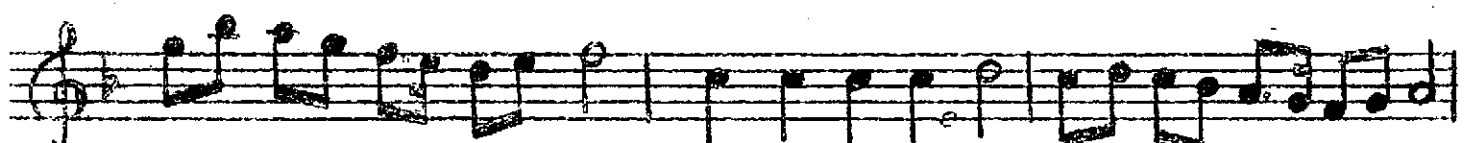
AH DEV RAN HA VA Dİ SİN DEN YOK KOR



KU ... MUZ FU ZÜ Lİ DÂ RÜL E MA Nİ MİZ DİR MEY



HA NE LER BU CA ĞI TEN NEN TEN NEN NEN



TE NE Nİ TE NEN TENE NEN TEN NEN TEN NEN NEN TE NE Nİ TE NEN TENE NEN



TEN NEN TEN NEN NEN TEN NEN TEN NEN NEN TEN



TEN TE NE Nİ TE NE NEN NÂ (saz)

MERHEM KOYUP ONARMA SİNEMDE KANLI DAĞI
SÖNDÜRME ÖZ ELİNLE YANDIRDIĞIN ÇERAĞI
ZÜLF-Ü SİYEH SANENLER OLMUŞ SENİN ESİREN
AŞKINDA HER BİRİNİN ÖZ ZÜLF Ü BOYNU BAĞI
DEVİRAN HAVADISINDEN YOK KORKUMUZ MUZÜLİ
DAR-ÜL EMANIMIZDIR MEYHANELER BUCAĞI